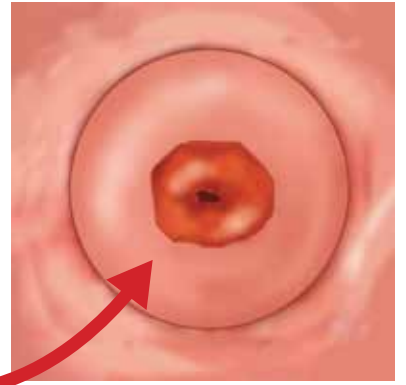


# HOW CAN YOU MINIMISE THE RISK OF MISSING A LESION?



Try out the **NEW**

***gynaecological combined  
speculum and light source – SPECU LED***



## WHEN IS SPECU LED USEFUL?

- during gynaecological examinations, if you want to be sure that no lesion has been missed,
- during gynaecological procedures (e.g. cervical ectropion removal) to make the workspace visible,
- when it is impossible to perform a colposcopy,
- when you need a light source and do not want to manipulate it to reduce shadow,
- when you do not want to assemble a lateral lamp each time.



**SPECU LED**

# A MISSED LESION MEANS THE RISK OF UNDETECTED DISEASE!



## SPECU LED

Specu Led specula emit undisturbed light **directly where it is needed**, making the lesion visible and allowing you to perform the examination or procedure in less time, with more precision and greater effectiveness.

The **LED light source** is exceptionally **strong**, powered by LR 41 batteries. This means about **12 hours of operation**.

### WHY USE SPECU LED?

- ➔ **increased visibility**, reducing the risk of missing a lesion and therefore **minimising the risk of disease progression**,
- ➔ you do not waste time in setting up a lamp, allowing you to **perform the examination/procedure more quickly and efficiently**,
- ➔ **available in four sizes: XS, S, M and L**, marked with different colours, making it easier to select the right size for the patient and **improving work place organisation**,
- ➔ **sterile**, single-packed, to minimise infection risk and increase **patient safety**,
- ➔ easy to switch on, making it easy to use,
- ➔ durable, **with CE certification**.

### Attractive prices!



Lock colours and valve sizes.

- XS – 20 mm
- S – 23 mm
- M – 25 mm
- L – 30 mm

### Buy without any risk!

*satisfaction guaranteed  
or money refunded*

Collective package: 100 items



Learn more or **order a free sample**